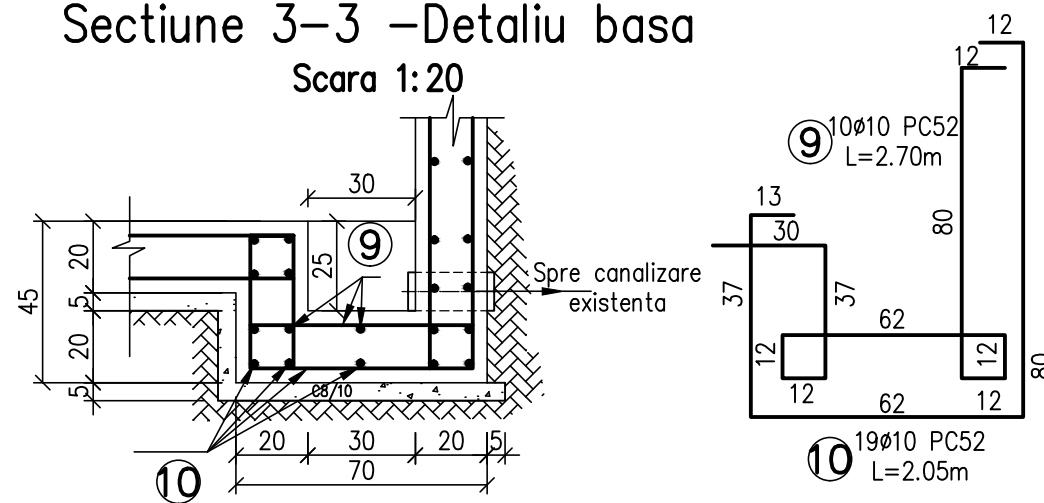


Sectioniune 3-3 -Detaliu basa
Scara 1:20





EXTRAS DE ARMATURA

Marca	Diametrul	Nr.bare elemente		Lungimi in m a unei bare	L/Ø	
		Intr-un element	In toate elementele		OB37	PC52
					Ø8	Ø10
1	10	14	14	4.88		68.3
2	10	14	14	4.64		65.0
3	10	12	12	6.84		82.1
4	10	12	12	6.36		76.3
5	10	6	6	12.78		76.7
6	10	6	6	12.30		73.8
7	10	32	32	0.80		25.6
8	8	120	120	0.30	36.0	
9	10	10	10	2.70		27.0
10	10	10	10	4.05		40.5
Total lungimi pe diametru					36.0	535.3
Kg/ml					0.395	0.617
Greutate pe diametre					14.2	330.3
Greutate totala Kg					344.48	

DOMENIUL DE EXIGENTA "A1"
CLASA DE IMPORTANTA "III"
CATEGORIA DE IMPORTANTA "C"

- Agregate naturale de masa volumetrica normala conf. SR EN 12620:2003
- Apa de amestec conf. SR EN 1008:2003
- Otel beton OB37 si PC52 conf. STAS438/1-89 si ST 009-05

CARACTERISTICI MATERIALE	
Beton de egalizare	C8/10
Beton armat	C30/37

▲	▲			6			
▲	▲			5			
▲	▲			4			
Rev.	Descriere		Data	Semnat	Rev.	Descriere	
Acest document este proprietatea S.C. ELLIS'92 S.R.L. si nu va fi comunicat fara autorizare							
Intocmit	Verificat	Aprobat	Beneficiar			Denumire proiect	
Zamfir A.	Petrosaau I.	Ionescu A.	CONPET SA			CONSTRUCTIE REZERVOARE PENTRU TITEL (V=2500 mc) STATIA DE POMPARE BILED TIMIS	
			CUVA DE BETON R2			Nr.: A646-CB-03	Rev 1
						Scara: 1: 20; 1: 50	
						Index: A646-CB-BD	
Material:			Masa: kg			Data: 11.2019	Plansa: 2/2